



Gas phase scale catcher for hydroprocessing reactors

Want to **remove** particles from your **naphtha gas** phase?

With Topsoe's gas phase scale catcher you can!

Topsoe's gas phase scale catcher effectively removes particles from the process stream and prevents reduction of bed void fraction and pressure drop build up.

Particles entering with the gas, are often preventing units from optimal performance. Topsoe has developed a gas phase scale catcher, which is especially designed to catch all sizes of particles from the gas stream. Installation of the technology can significantly prolong the cycle lengths of units suffering from pressure drop problems due to plugging.

Reliable and efficient scale catching for optimal performance

Topsoe's gas phase scale catcher is a sophisticated mechanical equipment designed to trap both small and large particles. Units suffering from premature shut-downs due to excessive pressure drop build-up can benefit significantly by installing the gas phase scale catcher. As particles are removed from the gas, it allows for full utilization of the catalyst and results in increased cycle length.

Easy access and easy cleaning

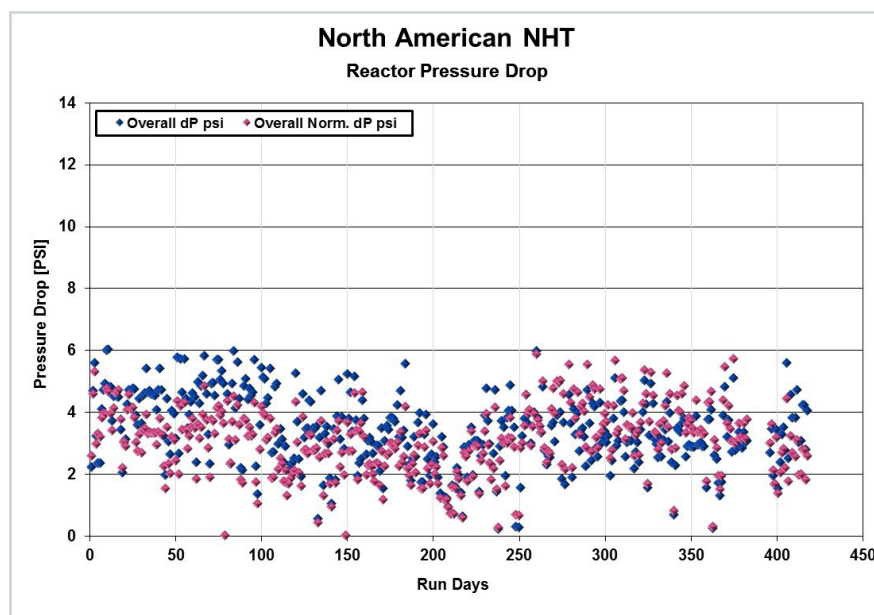
Throughout a cycle the scale catcher will collect corrosion products, fines and scales that are present in the gas stream. At turnaround the scale catcher can easily be accessed from the top of the reactor for cleaning. The particles that have settled in the scale catcher is simply vacuumed out, leaving the scale catcher clean and ready for the next cycle.

Retrofitting in existing reactors by Custom-made design

Each gas phase scale catcher is tailor-made for each reactor and is installed above the reactor tangent line or existing top distribution tray. Hence, installation of the scale catcher does not reduce the catalyst volume inside the reactor.

Advantages

- Improves reactor scale catching efficiency
- Ensures minimum pressure drop build-up during the entire cycle
- Easy to maintain and clean
- Custom-made design



Pressure drop for a North American Naphtha Hydrotreater with a Topsoe gas phase scale catcher installed.



The design of the gas phase scale catcher ensures that fines, scales, corrosion products and inorganic matter in the gas are removed. During turnaround the scale catcher can easily be accessed from the top of the reactor for cleaning.



Get in touch today
topsoe.com/contact